

Gravitational Assist

Jonathan Sokol

Instrumentation

2 Flutes (2nd doubles Piccolo)

2 Oboes

2 B \flat Clarinets

B \flat Bass Clarinet

2 Bassoons

4 F Horns – Mute needed

2 C Trumpets – Straight Mute needed

2 Trombones – Straight Mute needed

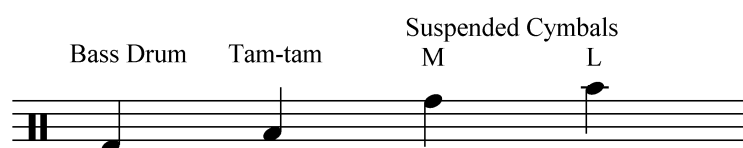
Bass Trombone – Straight Mute needed

Tuba

Timpani

1 Percussion:

Bass Drum, Glockenspiel, Tam-tam, 2 Suspended Cymbals (Medium and Large)




Strings

Performance Notes

Duration: 7 minutes 30 seconds

Transposed Score

 : as fast as possible.

Figures and patterns within boxes:

- Are meant to be played through the duration of the thick bar following the figure. Courtesy rests are given for figures that do not begin or end at the beginning of a measure to show placement.
- Are **not** intended to be performed as a section
- Are not affected by tempo fluctuations that apply to the general meter (accelerandos, ritards, fermatas, etc.).

ord. *ordinario*, default bow position

MSP *Molto sul ponticello*, as close to the bridge as possible

Vast, Planetary, Immense ♩ = 112

Gravitational Assist

Flute 1
Picc.
Flute 2/
Piccolo
Oboe 1
Oboe 2
B♭ Clarinet 1
B♭ Clarinet 2
B♭ Bass Clarinet
Bassoon 1
Bassoon 2

F Horn 1
F Horn 2
F Horn 3
F Horn 4
C Trumpet 1
C Trumpet 2
Trombone 1
Trombone 2
Bass Trombone
Tuba
Timpani
in C, G
Percussion
Glock.

Vast, Planetary, Immense ♩ = 112

Violin 1
Violin 2
Viola
Violoncello
Contrabass

7

Fl. 1

Fl. 2/
Picc. (picc.)

Ob. 1

Ob. 2

B♭ Cl. 1

B♭ Cl. 2

B. Cl.

Bsn. 1

Bsn. 2

F Hn. 1

F Hn. 2

F Hn. 3

F Hn. 4

C Tpt. 1

C Tpt. 2

Tbn. 1

Tbn. 2

B. Tbn.

Tba.

Timp.

Perc. (Glock.)

(Sus. Cym. L)

7

Vln. 1

Vln. 2

Vla.

Vc.

Cb.

7

8

9

10

11

12

13

Fl. 1

Fl. 2/
Picc.

Ob. 1

Ob. 2

B♭ Cl. 1

B♭ Cl. 2

B. Cl.

Bsn. 1

Bsn. 2

F Hn. 1

F Hn. 2

F Hn. 3

F Hn. 4

C Tpt. 1

C Tpt. 2

Tbn. 1

Tbn. 2

B. Tbn.

Tba.

Timp.

Perc.

13

(2 + 2 + 2)

Vln. 1

Vln. 2

Vla.

Vc.

Cb.

13

14

15

16

17

(3 + 2)

19

Fl. 1

Fl. 2/
Picc. (picc.)

Ob. 1

Ob. 2

B♭ Cl. 1

B♭ Cl. 2

B. Cl.

Bsn. 1

Bsn. 2

F Hn. 1

F Hn. 2

F Hn. 3

F Hn. 4

C Tpt. 1

C Tpt. 2

Tbn. 1

Tbn. 2

B. Tbn.

Tba.

Timp.

Perc.

Sus. Cym. M.

ff, *fp*, *f*, *mf*, *p*

(3 + 2)

19

Vln. 1

Vln. 2

Vla.

Vc.

Cb.

fp, *f molto espr.*, *ff*

18

19

20

21

22

23

This page contains the musical score for measures 27 through 30 of the piece 'Gravitational Assist'. The score is arranged in a standard orchestral layout with the following instruments and parts:

- Woodwinds:** Flute 1 and 2/Piccolo, Oboe 1 and 2, Bass Clarinet 1 and 2, Clarinet in B-flat, Bassoon 1 and 2, English Horn 1-4, Cor Anglais 1 and 2, Trumpet 1 and 2, Trombone 1, 2, and Bass Trombone, Tuba.
- Brass:** Trumpet 1-4, Trombone 1-2, Bass Trombone, Tuba.
- Strings:** Violin 1 and 2, Viola, Violoncello, Contrabass.
- Percussion:** Timpani and Percussion.

Key musical features include:

- Measures 27-30:** A complex passage featuring triplets and sixteenth-note patterns in the woodwinds and brass.
- Dynamic Markings:** *pp*, *ff*, *f*, *f* *molto espr.*, *fp*, *mf*, *f*, and *p*.
- Articulation:** *détaché* markings are present in the string parts.
- Tempo/Performance Indications:** *f* *molto espr.* is indicated for the woodwinds and brass.

Gravitational Assist - Full Score

(3 + 2)

Fl. 1

Fl. 2/
Picc.

Ob. 1

Ob. 2

B♭ Cl. 1

B♭ Cl. 2

B. Cl.

Bsn. 1

Bsn. 2

f molto espr.

fp *mf* *p*

fp *mf* *p*

7 7 7 7 5 3 3

F Hn. 1

F Hn. 2

F Hn. 3

F Hn. 4

C Tpt. 1

C Tpt. 2

Tbn. 1

Tbn. 2

B. Tbn.

Tba.

Timp.

Perc.
(Sus Cym. M, L)

p *fp* *mf* *p*

p *fp* *mf* *p*

p *fp* *mf* *p*

p *fp* *mf* *p*

fp *mf* *p*

fp *mf* *p*

fp *mf* *p*

fp *mf* *p*

fp *mf* *p*

fp *mf* *p*

fp *mf* *p*

3 3 3 3 3 3 3 3

(3 + 2)

Vln. 1

Vln. 2

Vla.

Vc.

Cb.

mf

mf

mf

mf

mf

Gravitational Assist - Full Score

This musical score page contains the following parts and details:

- Flutes:** Fl. 1 and Fl. 2/Picc. (Piccolo).
- Oboes:** Ob. 1 and Ob. 2.
- Clarinets:** B♭ Cl. 1 and B♭ Cl. 2.
- Bassoons:** B. Cl. (Bass Clarinet), Bsn. 1, and Bsn. 2.
- Horns:** F Hn. 1, 2, 3, and 4.
- Trumpets:** C Tpt. 1 and C Tpt. 2.
- Trombones:** Tbn. 1, Tbn. 2, B. Tbn. (Baritone), and Tba. (Tuba).
- Timpani:** Timp.
- Percussion:** Perc.
- Strings:** Vln. 1, Vln. 2, Vla. (Viola), Vc. (Violoncello), and Cb. (Contrabasso).

The score includes various musical notations such as triplets, slurs, and dynamic markings (*fp*, *mf*, *p*). The bottom of the page features a measure grid with numbers 36, 37, 38, 39, 40, and 41.

43 poco accel.

Fl. 1 (picc.) *ff* *p* *f molto espr.*

Fl. 2/ Picc. *ff* *p* *f molto espr.*

Ob. 1 *ff* *p* *f molto espr.*

Ob. 2 *ff* *p* *f molto espr.*

B♭ Cl. 1 *ff* *p* *f molto espr.*

B♭ Cl. 2 *ff* *p* *f molto espr.*

B. Cl. *ff* *fp* *mf* *p* *fp* *mf* *p* *fp* *mf* *p* *fp* *mf* *p*

Bsn. 1 *ff* *fp* *mf* *p* *fp* *mf* *p* *fp* *mf* *p* *fp* *mf* *p*

Bsn. 2 *ff* *fp* *mf* *p* *fp* *mf* *p* *fp* *mf* *p* *fp* *mf* *p*

F Hn. 1 *f* *p* *fp* *f* *fp* *f* *fp* *f* *fp* *f*

F Hn. 2 *f* *p* *fp* *f* *fp* *f* *fp* *f* *fp* *f*

F Hn. 3 *f* *p* *fp* *f* *fp* *f* *fp* *f* *fp* *f*

F Hn. 4 *f* *p* *fp* *f* *fp* *f* *fp* *f* *fp* *f*

C Tpt. 1 *ff*

C Tpt. 2 *ff*

Tbn. 1 *fp* *mf* *p* *fp* *mf* *p* *fp* *mf* *p* *fp* *mf* *p*

Tbn. 2 *fp* *mf* *p* *fp* *mf* *p* *fp* *mf* *p* *fp* *mf* *p*

B. Tbn. *fp* *mf* *p* *fp* *mf* *p* *fp* *mf* *p* *fp* *mf* *p*

Tba. *fp* *mf* *p* *fp* *mf* *p* *fp* *mf* *p* *fp* *mf* *p*

Timp. *p* *f* *Go to G₂*

Perc. *f*

43 poco accel.

Vln. 1 *mf* *f* *p* *f molto espr., broad*

Vln. 2 *mf* *f* *p* *f molto espr., broadly*

Vla. *mf* *f* *p* *f molto espr., broadly*

Vc. *mf* *f* *p* *f molto espr., broadly*

Cb. *p* *fp* *ff* *fp* *ff* *fp* *ff* *fp* *ff*

42 43 44 45 46 47

♩ = 120

Fl. 1

Fl. 2/
Picc.

Ob. 1

Ob. 2

B♭ Cl. 1

B♭ Cl. 2

B. Cl.

Bsn. 1

Bsn. 2

F Hn. 1

F Hn. 2

F Hn. 3

F Hn. 4

C Tpt. 1

C Tpt. 2

Tbn. 1

Tbn. 2

B. Tbn.

Tba.

Timp.

Perc.

♩ = 120

(3 + 2)

Vln. 1

Vln. 2

Vla.

Vc.

Cb.

48

49

50

51

52

rit.

♩ = 112

Gravitational Assist - Full Score

molto rall.

Fl. 1 (picc.)

Fl. 2 / Picc.

Ob. 1

Ob. 2

B♭ Cl. 1

B♭ Cl. 2

B. Cl.

Bsn. 1

Bsn. 2

F Hn. 1

F Hn. 2

F Hn. 3 (yes, B♭!)

F Hn. 4

C Tpt. 1

C Tpt. 2

Tbn. 1 (yes, E♭!)

Tbn. 2

B. Tbn.

Tba.

Timp.

Perc. (Sus Cym. M, L)

rit.

♩ = 112

molto rall.

Vln. 1

Vln. 2

Vla.

Vc.

Cb.

53

54

55

56

57

Fl. 1

Fl. 2/
Picc.

Ob. 1

Ob. 2

B♭ Cl. 1

B♭ Cl. 2

B. Cl.

Bsn. 1

Bsn. 2

F Hn. 1

F Hn. 2

F Hn. 3

F Hn. 4

C Tpt. 1

C Tpt. 2

Tbn. 1

Tbn. 2

B. Tbn.

Tba.

Timp.

Perc.

ff, *fp*, *ff*, *p*, *mf*, *f*, *pp*, *f*, *mf*, *p*, *pp*, *f*, *ff*, *fp*, *brassy*, *f sub.*, *wooden sticks*, *to Glockenspiel*

Vln. 1

Vln. 2

Vla.

Vc.

Cb.

ff, *fp*, *ff*, *mf*, *p*, *mf*, *p*, *ff*, *pp*, *f*, *ff*, *non-div.*, *non-div.*, *non-div.*, *non-div.*

N.B. 8^{va} if available.

poco rit.

The score is arranged in systems. The woodwind section includes Flutes 1 and 2 (Piccolo), Oboes 1 and 2, Clarinets in Bb and B, Bassoons 1 and 2, and Horns 1-4. The brass section includes Trumpets 1 and 2, Trombones 1, 2, and Bass, and Tuba. Percussion includes Timpani and Glockenspiel. The string section includes Violins 1 and 2, Viola, Violoncello, and Contrabass. Dynamics include *fp*, *ppp poss.*, and *p*. Performance markings include *(picc.)*, *(ord.)*, *MSP*, and *Glock.*. A *poco rit.* marking is present at the top and bottom of the page.

70 ♩ = 72

Fl. 1

Fl. 2/
Picc.

Ob. 1

Ob. 2

B♭ Cl. 1

B♭ Cl. 2

B. Cl.

Bsn. 1

Bsn. 2

ppp poss.

p

non-vib.

pp

pp empty

pp empty

pp empty

non-vib.

pp empty

non-vib.

pp empty

F Hn. 1

F Hn. 2

F Hn. 3

F Hn. 4

C Tpt. 1

C Tpt. 2

Tbn. 1

Tbn. 2

B. Tbn.

Tba.

Muted

p

Timp.

Perc.

70 ♩ = 72

Vln. 1

Vln. 2

Vla.

Vc.

Cb.

p

p

p

p

p

p

mf

mf

mf

ppp

ppp

div., MSP

II

III

I

V

V

V

70 71 72 73 74 75

Fl. 1

Fl. 2/
Picc.

Ob. 1

Ob. 2

B \flat Cl. 1

B \flat Cl. 2

B. Cl.

Bsn. 1

Bsn. 2

F Hn. 1

F Hn. 2

F Hn. 3

F Hn. 4

C Tpt. 1

C Tpt. 2

Tbn. 1

Tbn. 2

B. Tbn.

Tba.

Timp.

Perc.
(Glock.)

Vln. 1

Vln. 2

Vla.

Vc.

Cb.

76

77

78

79

80

81

Fl. 1

Fl. 2/
Picc.

Ob. 1

Ob. 2

B♭ Cl. 1

B♭ Cl. 2

B. Cl.

Bsn. 1

Bsn. 2

F Hn. 1

F Hn. 2

F Hn. 3

F Hn. 4

C Tpt. 1

C Tpt. 2

Tbn. 1

Tbn. 2

B. Tbn.

Tba.

Timp.

Perc.

to Bass Drum

Bass Drum

pp

to Flute

pp

p

mf

remove mute

Muted

pp

p

pp

mf

remove mute

remove mute

remove mute

Solo

mf espr.

St. Mute

pp

p

pp

mf

remove mute

St. Mute

pp

p

pp

mf

remove mute

St. Mute

pp

p

pp

mf

remove mute

pp

p

pp

mf

p

Vln. 1

Vln. 2

Vla.

Vc.

Cb.

III

gliss.

fp

ppp

gliss.

mf

ppp

div., MSP non-vib.

ppp

static, infinite

div., MSP non-vib.

ppp

static, infinite

unis., MSP non-vib.

ppp

static, infinite

div., (MSP)

pp

p

pp

p

ppp

static, infinite

arco, (MSP)

p

ppp

static, infinite

N.B. 8th if available.

82

83

84

85

86

87

88

Fl. 1

Fl. 2/
Picc. (to flute)

Ob. 1

Ob. 2

B♭ Cl. 1

B♭ Cl. 2

B. Cl.

Bsn. 1

Bsn. 2

F Hn. 1

F Hn. 2

F Hn. 3

F Hn. 4

C Tpt. 1

C Tpt. 2

Tbn. 1

Tbn. 2

B. Tbn.

Tba.

Timp.

Perc. (Bass Drum)

Vln. 1

Vln. 2

Viola, 3 soli

Vla.

Vc.

Cb.

ppp static

ppp static

p

mf espr.

ppp

pp

to Glockenspiel

Glock. Lv.

p

95

MSP

p

mf

p

N.B. Not together. As much rhythmic diversity as possible. Always begin slowly, hesitantly, with uncertainty.

accel.

rit.

Fl. 1

Fl. 2/
Picc. *ppp static*

Ob. 1

Ob. 2

B♭ Cl. 1

B♭ Cl. 2

B. Cl.

Bsn. 1 *ord. ppp p ppp*

Bsn. 2 *ord. ppp p ppp*

F Hn. 1

F Hn. 2

F Hn. 3

F Hn. 4

C Tpt. 1 *poco* *p* *mf espr.*

C Tpt. 2

Tbn. 1

Tbn. 2

B. Tbn.

Tba.

Timp. *ppp*

Perc. *ppp*

Vln. 1

Vln. 2

Vla. div. *Viola 3 soli* *p* *mf* *p* *accel.* *rit.*

Vc.

Cb.

Gravitational Assist - Full Score

Fl. 1 (flute) *ord.* *pp* *mf* *pp* *mf* *pp*

Fl. 2/ Picc. *pp* *mf* *pp* *mf* *pp*

Ob. 1 *ord.* *pp* *mf* *pp* *mf* *pp*

Ob. 2 *ord.* *pp* *mf* *pp* *mf* *pp*

B♭ Cl. 1 *pp* *mf* *pp* *mf* *pp*

B♭ Cl. 2 *pp* *mf* *pp* *mf* *pp*

B. Cl. *pp* *p* *pp* *pp* *p* *pp*

Bsn. 1 *pp* *p* *pp* *pp* *p* *pp*

Bsn. 2 *pp* *p* *pp* *pp* *p* *pp*

F Hn. 1 -

F Hn. 2 -

F Hn. 3 -

F Hn. 4 -

C Tpt. 1 *p* *p* *mf* *p* *mf* *pp*

C Tpt. 2 -

Tbn. 1 -

Tbn. 2 -

B. Tbn. -

Tba. -

Timp. -

Perc. (Glock.) *pp* *pp* *to Sus. Cym. L.*

Vln. 1 *f* *p*

Vln. 2 *unis.* *f* *p*

Vla. div. *p* *accel.* *f* *p* *ord.* *mf espr.* *ord.* *mf espr.*

Vc. *p* *pp* *p* *pp*

Cb. *p* *pp* *p* *pp*

103

104

105

106

107

108

Fl. 1

Fl. 2/
Picc. *to Piccolo*

Ob. 1

Ob. 2

B♭ Cl. 1

B♭ Cl. 2

B. Cl.

Bsn. 1

Bsn. 2

F Hn. 1

F Hn. 2

F Hn. 3

F Hn. 4

C Tpt. 1 *to St. Mute*

C Tpt. 2

Tbn. 1

Tbn. 2

B. Tbn.

Tba.

Timp.

Perc. *Sus. Cym. L.*

Vln. 1

Vln. 2 *ord., tutti*
mf espr.

Vla. *(tutti)*
p pizz. *mf espr.*

Vc.

Cb. *mf*

Fl. 1

Fl. 2/
Picc. (to picc.)

Ob. 1

Ob. 2

B \flat Cl. 1 *mf* *pp* *mf* *pp* *mf* *pp*

B \flat Cl. 2 *mf* *pp* *mf* *pp* *mf* *pp*

B. Cl. *mf* *pp* *mf* *pp* *mf* *pp*

Bsn. 1 *mf* *pp* *mf* *pp* *mf* *pp*

Bsn. 2 *mf* *pp* *mf* *pp* *mf* *pp*

F Hn. 1 *mf* *p*

F Hn. 2 *mf* *p*

F Hn. 3 *mf* *p*

F Hn. 4 *mf* *p*

C Tpt. 1 (muted) *p* *mf* *p*

C Tpt. 2 *mf* *p*

Tbn. 1 *mf* *p*

Tbn. 2 *mf* *p*

B. Tbn. *mf* *p*

Tba. *mf* *p*

Timp. *mf* *p*

Perc. *mf* *pp* *L.v. to Tam-tam*

Vln. 1 *p* *p* *Tutti unis.* *(nV)* *pp*

Vln. 2 *mf espr.* *3* *3* *3* *p* *MSP* *p echo*

Vla. *mf espr.* *3* *3* *3* *p*

Vc. *mf* *arco* *mf* *f* *p*

Cb. *mf* *mf*

116

117

118

119

120

121

This page of the musical score covers measures 122 through 128. The woodwind section includes Flutes 1 and 2/Picc., Oboes 1 and 2, Clarinets in Bb 1 and 2, Bass Clarinet, Bassoons 1 and 2, and four Flute Horns. The brass section consists of three Trumpets (C), three Trombones (Bb), and a Tuba. The percussion section includes Timpani and other Percussion. The string section includes Violins 1 and 2, Viola, Violoncello, and Contrabass. The score features complex rhythmic patterns with many triplets and slurs. Dynamics range from *pp* to *fp*. Performance instructions include *arco, MSP (tutti)* for the strings and *pizz.* for the cello. The woodwinds and brass play a melodic line with triplets, while the strings provide a rhythmic accompaniment.

122 123 124 125 126 127 128

Fl. 1

Fl. 2/
Picc. (to picc.)

Ob. 1

Ob. 2

B♭ Cl. 1

B♭ Cl. 2

B. Cl.

Bsn. 1

Bsn. 2

F Hn. 1

F Hn. 2

F Hn. 3

F Hn. 4

C Tpt. 1

C Tpt. 2

Tbn. 1

Tbn. 2

B. Tbn.

Tba.

Timp.

Perc.

Vln. 1

Vln. 2

Vla.

Vc.

Cb.

Fl. 1
Picc.
Ob. 1
Ob. 2
B♭ Cl. 1
B♭ Cl. 2
B. Cl.
Bsn. 1
Bsn. 2

F Hn. 1
F Hn. 2
F Hn. 3
F Hn. 4
C Tpt. 1
C Tpt. 2
Tbn. 1
Tbn. 2
B. Tbn.
Tba.
Timp.
Perc.

Vln. 1
Vln. 2
Vla.
Vc.
Cb.

Fl. 1
Picc.
Ob. 1
Ob. 2
B♭ Cl. 1
B♭ Cl. 2
B. Cl.
Bsn. 1
Bsn. 2

F Hn. 1
F Hn. 2
F Hn. 3
F Hn. 4
C Tpt. 1
C Tpt. 2
Tbn. 1
Tbn. 2
B. Tbn.
Tba.
Timp.
Perc.

ord. → MSP → ord. accel. → MSP → ord.
Vln. 1 *p* → *f* *mf* → *f* *mf* → *f* *mf* → *f* *mf* → *f* *espr.!*
Vln. 2 *f* *mf* *f* *mf* *f* *mf* *f* *mf* *f* *mf* *f*
Vla. *p* *f* *mf* *f* *mf* *f* *mf* *f* *mf* *f* *mf* *f*
Vc. *p* *f* *mf* *f* *mf* *f* *mf* *f* *mf* *f* *mf* *f*
Cb.

145 ♩ = 112

Fl. 1 *f*

Picc. *f*

Ob. 1 *f*

Ob. 2 *f*

B♭ Cl. 1 *f*

B♭ Cl. 2 *f*

B. Cl. *f*

Bsn. 1 *f*

Bsn. 2 *f*

F Hn. 1

F Hn. 2

F Hn. 3

F Hn. 4

C Tpt. 1

C Tpt. 2

Tbn. 1

Tbn. 2

B. Tbn.

Tba.

Timp.

Perc. *mf*

Glock.

145 ♩ = 112

molto rall.

Vln. 1

Vln. 2 *f* *espr.!*

Vla. *f*

Vc. *f*

Cb. *f* arco, ord.

N.B. 8^{va} to end if available

145 146 147 148 149 150 151

Musical score for woodwinds and percussion. The score includes staves for Fl. 1, Picc., Ob. 1, Ob. 2, B♭ Cl. 1, B♭ Cl. 2, B. Cl., Bsn. 1, Bsn. 2, F Hn. 1, F Hn. 2, F Hn. 3, F Hn. 4, C Tpt. 1, C Tpt. 2, Tbn. 1, Tbn. 2, B. Tbn., Tba., Timp., and Perc. The woodwind and percussion staves are currently empty.

Musical score for strings. The score includes staves for Vln. 1, Vln. 2, Vla., Vc., and Cb. The Vln. 1 and Vln. 2 staves contain musical notation with dynamics markings *ff* and *p*. The Cb. staff contains musical notation with a dynamic marking *ff*.

152

153

154

155

156

157

158

Gravitational Assist - Full Score

Fl. 1

Picc.

Ob. 1

Ob. 2

B♭ Cl. 1

B♭ Cl. 2

B. Cl.

Bsn. 1

Bsn. 2

abrupt cutoff!

abrupt cutoff!

abrupt cutoff!

abrupt cutoff!

abrupt cutoff!

abrupt cutoff!

abrupt cutoff!

abrupt cutoff!

abrupt cutoff!

F Hn. 1

F Hn. 2

F Hn. 3

F Hn. 4

C Tpt. 1

C Tpt. 2

Tbn. 1

Tbn. 2

B. Tbn.

Tba.

Timp.

Perc.

abrupt cutoff!

Vln. 1

Vln. 2

Vla.

Vc.

Cb.

pp

pp

p

p

p

abrupt cutoff!

f

pizz.

159

160

161

162

163

Gravitational Assist - Full Score

The score is arranged in a standard orchestral format. The top section consists of woodwinds: Flute 1, Piccolo, Oboe 1, Oboe 2, Clarinet in Bb 1, Clarinet in Bb 2, Clarinet in B, Bassoon 1, and Bassoon 2. The middle section consists of brass: French Horn 1-4, Trumpet 1-2, Trombone 1-2, Baritone Trombone, and Tuba. Below the brass is the Timpani part. The bottom section consists of strings: Violin 1-2, Viola, Violoncello, and Contrabass. The Percussion part is specifically for Suspended Cymbal Left. The woodwind parts feature a melodic line starting at measure 164, marked with a forte (*f*) dynamic and an accent (>). This line is repeated in the Piccolo, Oboe 1, Oboe 2, Clarinet in Bb 1, Clarinet in Bb 2, Clarinet in B, Bassoon 1, and Bassoon 2 parts. The instruction "abrupt cutoff!" is written above the staff for each woodwind instrument at the end of their respective melodic phrase. The string parts provide harmonic support with sustained notes and pizzicato passages. The Percussion part features a rhythmic pattern with dynamics ranging from *ppp* to *f*. The score is divided into measures 164 through 168.

N.B. These grace notes on the beat, as fast as possible.