

(^^^)

Jonathan Sokol

Performance Notes



There are two versions of the score:

- 1.) A written performance score.
- 2.) The same written score (marked "Played"), with an ossia line above to indicate the actual sounding pitches (marked "Sounding")

N : normal / ordinary playing

ST : sul tasto

MSP : *molto* sul ponticello. Such passages should be played as close to the bridge as possible.

▲ : highest note possible.

◊ : highest harmonic possible.

× / ∅ : scratch-tone (occasionally abbreviated as *sc. t.*)

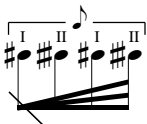
‡ : quarter-tone sharp

: three quarter-tones sharp

♭ : quarter-tone flat



: unmeasured accelerando (or ritardando if reversed). The figures should not be limited to the number of notes notated in the passage; play as many as possible.



: unmeasured accelerated bow tremolo between an open string and an adjacent string. A slight microtonal difference is desired.

Duration: 7 minutes

(^ ^ ^)
for Solo Double Bass

Flexible (♩ = 72)

Sounding

Played

pizz. ϕ arco ST → MSP → N N → MSP N

fff *< mf > pp* *f* *mf > p* *p* *< p* *< p p < mf*

6

S

P

rit. ... Tempo rit. ... Tempo

ST → MSP → N → MSP → N → MSP

< mf > pp *< mf > p* *< mf > p* *mf sub.* *p sub.* *p sub.* *mf sub.* *p sub.* *poco mf fff*

12

S

P

N → MSP → N MSP N → MSP → N → MSP

arco *pp < mf > pp* *< f* *mf > p* *mf sub.* *pp < mf > pp* *mf sub.* *p* *mf < f*

16

S

P

(3 + 2) (2 + 2 + 3)

N IV III MSP → N → MSP N III IV III

p < mf *mf < f* *p sub.* *f* *ff* *mf* **) change bow as necessary* *ffpp* *< mf*

rit. ----- Tempo rit. ♩ = 60

21

S

P

MSP N MSP N MSP N MSP

II III II III II III

p sub. *f* *p sub.* *f* *p sub.* *f* *f > p* *sub.* *f* *f*

27

S

P

N MSP N MSP N

I II 3 3 3 3 3 3 3 3 5

f *f* *f* *f* *f* *f* *f* *f* *f* *p*

accel.

31

S

P

5 5 III IV

ff *p* *mf* *p* *mf* *p* *f sub.* *p sub.* *f sub.* *p sub.*

(♩ = 104) Tempo (♩ = 60)

accel. ----- Tempo

36

S

P

MSP N MSP N N

III (ord. → scratch tone) (ord.)

f sub. *p sub.* *ff* *ffpp* *molto* *f* *p sub.* *ff* *p* *f* *p sub.*

42

S

P

MSP (ord. → scratch tone) N (ord.) MSP (ord. → sc. t. → ord.) N (ord.) MSP (vib.)

ff > p < f ffpp < ff > p ff f

rit. ♩ = 72 rit. ♩ = 60

49

S

P

N MSP tr I (ord. → sc. t. → ord.)

ff pp sub. mf > pp < mf > pp ff > pp

54

S

P

(ord. → sc. t. → ord.)

ff > pp ff > pp < mf > pp ff > pp ff > pp ff > pp < mf > pp < mf > pp < mf > pp

58

S

P

(ord. → IV sc. tone, explosive) pizz. ♪ (MSP) arco, ord. IV pizz. ♪ arco I II I II (vib.) MSP II

molto fff fff ff fff molto ff pp static

accel.

63

S

P

(MSP)

I N I II

ff *fff* *molto ff* *fff* *ffff*

♩ = 76

67

S

P

MSP N MSP ord.

(col legno)

ff *p* *ff* *fffpp* *ppp*

69

S

P

mf *pp sub.*

71

S

P

pp

73

S

P

ff *pp sub.* *ff* *pp sub.* *pp sub.* *f* *pp sub.* *f* *pp sub.* (*f*) *pp*

75

S

P

77

S

P

f *p* *f* *p*

79

S

P

pp *f* *pp sub.* *f* *pp sub.* *f*

81

S

P

MSP (sub.)

pp sub. *) smooth changes, glissando

83

S

P

poco accel.

f *pp sub.* *f pp sub.* *molto*

6

←-♪ = ♪-→ (♩. = 80 - 84)
(←-♪ = ♪-→)

85

S

P

ff

91

S

P

97

S

P

← ♩ = ♩ → (♩ = 72 sub.) Immediate molto accel.

103

S

P

ff sempre!

sim.

(♩ = 208)

107

S

P

← ♩ = ♩ → (♩ = 69 sub.)

111

S

P

fff

(3 + 2 + 3)

115

S

P

f *fff* *f* *fff* *f* *fff* *f*

118

S

P

fff *f* *fff* *f* *fff* *f* *fff* *f* *fff* *f* *fff*

I° ♩ = 60 sub.

122

S

P

(scratch tone ord.)
III IV

f *fff* *f* *fff* *fff* *ffpp* *fff* *pp* *<f> pp* *sub.*

127

S

P

MSP

III

N IV
ricochet

(vib.)

MSP

ff > pp *< f* *< f* *mf < f*

133

S

P

N
ricochet

pizz. (vib.)

(vib.)

slow arp. (vib.)

f *p* *pp* *ppp*

sub.